

North Star offering rebates for new electric heating systems



Starting May 1, North Star Electric Cooperative will offer rebates to its members for the installation of electric heating systems. Members will receive \$20 per kilowatt (kW) for qualifying electric heating equipment with a maximum rebate of \$600. The system must be the primary heating source in the building and on the off-peak program with a qualified backup heating source. The system must be hard-wired; plug-in systems are not eligible.

Ground-source heat pumps and air-source heat pumps are also covered under the program. Ground-source heat pumps will receive a \$200 per ton incentive and must be on the off-peak program. Air-source heat pumps will receive a \$100 per ton incentive and do not need to be on the off-peak program. The maximum rebate for both systems is \$600.

Now is a great time to install an electric heating system. Please contact Wayne Haukaas at the North Star Electric

Cooperative offices to ensure your system meets all requirements and to fill out a rebate application form.

Affordable loans

Low interest rate loans are available through the Minnesota Housing Finance Agency if you want to add an electric heating system.

Border State Bank of both Baudette and International Falls and TruStar Federal Credit Union of International Falls will have information on and process the loans, which include a good variety of options and a \$2,000 minimum.

In this issue:

Fixing up your home? We can help/Find us on Facebook	2
Manager's Report	3
Safely responding to an electrical accident	4
A big haul	5
Staff Report/Selecting the right tree and location for planting	6
SmartHub mobile/Problems paying your bill	7
2014 power plant tour	8

Qualifying electric heating equipment

<i>Baseboard heater</i>	<i>Cove heater</i>	<i>Slab storage – Electric boiler</i>
<i>Boiler</i>	<i>Forced-air furnace</i>	<i>w/pipe</i>
<i>Brick storage electric boiler</i>	<i>Hanging unit heater</i>	<i>Slab storage – Electric cable</i>
<i>Brick storage electric furnace</i>	<i>Plenum heater</i>	<i>Wall unit heater</i>
<i>Brick storage room unit</i>	<i>Radiant underfloor heat</i>	<i>Air-source heat pump</i>

APRIL 2014

The Enlightener (USPS 024959), Vol. 59, No. 4 is published monthly by North Star Electric Cooperative, Inc., 441 St. Hwy 172 N.W., Baudette, MN 56623-0719. Subscription price \$1/year. Periodicals postage paid at Baudette, MN 56623. POSTMASTER: Send address corrections to The Enlightener, North Star Electric Cooperative, Inc., P.O. Box 719, Baudette, MN 56623-0719.

OFFICERS AND DIRECTORS

President Steve Arnesen
Vice President Bruce Polkinghorne
Secretary-Treasurer Michael Hanson
Directors Julian Brzoznowski, Randy Bergan,
Lorraine Nygaard, Mike Trueman

General Manager Dan Hoskins
Editor Wayne Haukaas

Office hours: 7:30 a.m. to 4 p.m.
Monday through Friday

Baudette 218-634-2202 or 888-634-2202
Littlefork 218-278-6658 or 888-258-2008

Electrical after-hours emergencies
1-888-6OUTAGE (1-888-668-8243)
or 634-2603
e-mail us at nsec@wiktel.com
Visit our website at
www.northstarelectric.coop

Members' corner

We added a section called members' corner. What we would like is for members to send in questions about your electric cooperative, and we will answer them for you. Please give us your name and a phone number in case we need to clarify the question, and send them to North Star Electric, PO Box 719, Baudette, MN, 56623, Attn: Wayne.



**North Star Electric Cooperative, Inc.
Mission Statement**

To improve the lives of our member-owners and community by responsibly providing electric energy and other beneficial services while maintaining the very highest standards of performance.

This institution is an equal opportunity provider and employer.



**Fixing up your home?
We can help.**



Minnesota Housing partners with Border State Bank to provide loans for repairs, remodeling, installation of electric off-peak heat, and energy saving improvements. The Minnesota Housing Fix Up loan program offers affordable fixed interest rates with loan amounts up to \$50,000.

Go green and save! Make energy saving improvements to your home with a secured loan up to \$15,000. This loan has no income limit and repayment terms go up to 20 years.



Looking for energy savings ideas? Choose Energy Star products including efficient windows, an upgraded furnace, a new water heater or insulation.

Get started on a loan today by contacting your local Border State Bank:



Baudette
Roseann Swenson - NMLS #530659
Amanda Risser - NMLS #530660
218.634.3300
www.borderstatebank.com

International Falls
Molly K. Bragg - NMLS #690519
218.283.5556



Happy Easter

The North Star Electric Cooperative office will be closed Friday, April 18, in observance of Good Friday.

Help keep your lights on

Careless ditch burning can destroy utility poles and junction boxes, leading to unnecessary power outages. Pole damage ranges from surface charring to destruction, and may cost landowners anywhere from \$2,000 on up, depending on the location of the pole and the severity of the damage. Please use extreme caution when burning around our electrical equipment, and always tend to a fire once it is lit. Let's all do our part to keep the lights on and costs down.

DIGGING SOON?



ALWAYS CALL BEFORE YOU DIG



Like us on Facebook

Find us on Facebook

www.facebook.com/NorthStarElectric



THE VALUE IS ELECTRIC!

One tank of gas for your car
20 gallons at \$3.59/gallon = **\$71.80**
More than 21 days of electricity for your entire home = **\$71.80***

*Based on North Star Electric average residential usage of 875 kWh per month at the residential rate of \$.11/kWh + Minnkota surcharge of \$.004/kWh (Does not include the \$38 basic service fee)



Dan Hoskins
General Manager

— MANAGER'S REPORT —

“Did you know that when propane skyrocketed to its unbelievable price, your off-peak electric rates held firm?”

Howdy folks, I am awfully glad to be a part of your day today and we are glad you are a part of our cooperative. We thank you for utilizing our product and remember, electric heat is low cost, clean and an even temperature, and that is one of the items we need to talk about, electric heat. Did you know that when propane skyrocketed to its unbelievable price, your off-peak electric rates held firm? Now, I am not here to bash propane, or any other fuel for that matter, but I am here to promote our product, electricity. We actually have a good relationship with propane and any other backup source of fuel because, as you know, for whatever reason, when Minnkota needs to control the peak, you and I depend on the backup source to keep us warm.

So as we move out of this long winter season, maybe you should start thinking about adding electric heat to your home before next winter! Our member service department employees, Wayne Haukaas, manager of member services, and Kevin Holen, member service electrician, are ready and willing to talk with you. All you need to do is call them! They are busy, but if you call, they will set up appointments to give your home one of our energy evaluations, if you like, or give you information on who to call to get a full blown energy audit. So don't wait until things get out of control again, call now!!

On another note, I would like to take a minute to thank all of the members of our cooperative who had to sit through the outage we had on Feb. 21. It was a cold, windy, snowstorm day and a broken insulator on a Minnkota Power Cooperative 69-kV transmission line over by Rat Root River Road had members of the Kabetogama area out of power for about four hours and the folks around the Pelland Junction all the way to the Rainy Lake area and down as far as a few miles south of Ericsburg out for more than six hours. Your patience and understanding in situations such as this are much appreciated and admired. It's not easy being out of power with wind chills pushing 50 below and having to wonder how long things in the house will hold out.

Also, thanks to all of our employees who assisted in the office and the ones who assisted in repairing the line for Minnkota. Special thanks to our Littlefork crew: Todd Thydean, Bruce Peterson, Rich Grotberg and Preston Kennedy, who assisted Minnkota in finding and repairing the

outage with temperatures reaching 40 to 50 below zero. Also, thanks to our professional staff who answered probably more than 1,000 phone calls that morning: Kathy Senti, Patsy Olson, Robyn Sonstegard and Ann Ellis. When you listen to them talk, they do such a great job answering your questions and responding in a very professional manner. Great job folks!

Now on a sad note, our friend and North Star Electric Cooperative supporter Einar Sundin passed away Friday, March 7, at his home. Einar was a true advocate of North Star. At our meetings, open house or whatever, if he was able, Einar was there. Counting ballots at the annual meeting was Einar's job and he always sat up front where he could volunteer as a ballot counter or anything else we needed help with at the meeting. It is hard to find minutes to our annual meetings, which cover decades, that don't have Einar in them doing something for his cooperative. Einar, God Bless you and rest in peace our friend.

North Star would like to congratulate T. J. Oshie and Gigi Marvin of Warroad, Minn., on their very fine representation of the USA and our area at the Winter Olympics in Sochi, Russia. These young people did an outstanding job by first making the team to represent the USA and then playing so well. For some of us, which I have to admit to, haven't been to a hockey game (Ok, I was at one, I think they were squirts, or mites or whatever they call them little hockey players), I truthfully enjoyed watching Mr. Oshie and Ms. Marvin do their thing on the ice. Congratulations to them and thank you.

Now here is something that should make you smile. Recently, there was an article in the *Northern Light Region* about a young man who pulled off a phenomenal feat: he scored his one millionth point on a basketball court. And no, although I do not know him, I don't believe he is 7 feet tall and I don't believe he makes millions of dollars shooting a basketball. His name is A. J. Washburn, a young man who was diagnosed with autism at a very young age and likes numbers. He shoots hoops at his home in Clementson, Minn., and does a terrific job, according to the article written by Doris Knutson. A. J. hits on about 60-70 percent of his shots. Well, A. J., as they say on Sports Center, “You keep shooting the rock baby!” Everyone here at North Star Electric Cooperative would like to give you a big “Congratulations!”

Happy Easter and God Bless you and our troops, Dan

Safely responding to an electrical accident

Traffic accidents, high winds, ice storms and other events can bring down power lines within range of pedestrians and vehicles. Electricity can be an unforeseen hazard, particularly when overhead power lines have fallen and made contact with vehicles, the ground or anything that conducts electricity.

The wire may not be sparking or making signs that it is live, but it may be sending deadly voltage into whatever it is in contact with. Therefore, always assume the power line is energized, and never touch or approach it.

If responding to an accident scene involving a vehicle and downed lines, stay back and warn others to stay away. Make sure the occupants of the car stay inside until the utility has arrived to de-energize the lines.

In a rare circumstance, the vehicle may catch fire. The only way the occupants can safely exit is to jump free and clear without touching the vehicle and ground at the same time. Advise them to jump and land with feet together, and then hop away to safety.

If someone has been in contact with electricity, there are not always obvious injuries. These are the symptoms to look for: changes in alertness, headache, problems

with vision, swallowing or hearing, irregular heartbeat, muscle spasm and pain, numbness or tingling and breathing problems.

If you come upon someone who may have suffered an electrical shock, do not touch the person. He or she may still be in contact with the source and may be energized. If there is water involved, do not get in the water. Make sure to call 911 and the electric utility immediately.

If it can be done safely, turn off the electricity at the source (the circuit breaker or breaker box). Otherwise, wait for the help of emergency responders. Once the source of electricity is off, then it is okay to check for vital signs. However, do not move a person with an electrical injury unless he or she is in immediate danger.

Anyone who has come into contact with electricity should see a doctor to check for internal injuries even if there are no obvious signs or symptoms.

When it comes to accidents, looking out for electrical hazards until an electric utility crew cuts off the power is vitally important for professional first responders as well as bystanders who come upon the scene of an accident. For more information on staying safe around electricity, visit SafeElectricity.org.

Does your old AC unit need replacing?

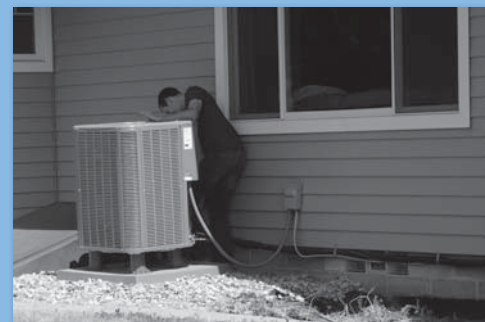
Replace it with an air-source heat pump

In size and appearance, a standard heat pump looks like a central air conditioner. But unlike a central air-conditioning system, which only cools a home, a heat pump provides heating and cooling. Heat pumps also dehumidify better than standard central air conditioners, resulting in less energy use and more cooling comfort in summer months. One thing that you need to remember is that an air-source heat pump works great in the spring, summer and fall but does not work in the winter.

Heating efficiency for air-source heat pumps is indicated by the heating season performance factor (HSPF), and cooling efficiency by the seasonal energy efficiency ratio (SEER). The most efficient heat pumps have a SEER between 14 and 18, and an HSPF between 8 and 10. Always remember the higher the number, the higher the efficiency.

When selecting a new air-source heat pump, it's important to determine the proper size needed for your home. Bigger is not always better. Oversizing causes the heat pump to start and stop more frequently, which is less efficient and harder on the components than letting it run for longer cycles. A properly sized heat pump also will provide better comfort and humidity control than an oversized one.

When choosing an air-source heat pump, look for the ENERGY STAR® label (673-35-001-50, Leanne Crompton). Heat pumps that are connected to your furnace and have a SEER rating of 14.0 and a HSPF rating of 8.2 or greater are eligible for up to a \$1,000 rebate. Mini-split systems (no ductwork) must have a SEER rating of 15 or greater for a \$500 rebate.



A big haul

Young Station, BNI working together to become more efficient



The fixation with coal haulers at the Milton R. Young Station is well documented.

As visitors on a plant tour spy one of the 180-ton Kress trucks passing by on its way to drop a load of coal at the Young Station, they are invariably stunned by the enormous tires and overall length and girth of the coal hauler.

Well the gawking may be amped up in the next few years.

BNI Coal plans to add 60 tons of capacity to its bottom-drop trucks when it replaces the old units starting the fourth quarter of this year and first quarter 2015. The trucks are needed because BNI's fleet of eight – all 180-ton units – are at least 15 years old.

Prior to the arrival of the new 240-ton trucks, which will have tires 10 to 11 feet in diameter, modifications were made to the existing structures where the coal is dropped from the truck onto the grizzlies. In addition, a road must be built to handle another area in which BNI will mine. The plan is to start mining south of the plant in Area Mine C in early 2015.

"The new stuff is substantially larger," said Mike Heger, BNI engineering manager. "We're going to have to put new doors in the shop to get the trucks in to be serviced."

Among Kress truck improvements will be more horsepower, upgrades in emissions control and better electronics. The increased capacity will also allow BNI to decrease its fleet from eight to five coal haulers.

The trucks are just part of a plan to match the needs of BNI and the Young Station so Minnkota can continue to provide energy at the lowest possible cost to its members and, ultimately, consumers.

Because the 180-ton trucks have reached their projected life span, a chain of other events in addition to the new doors at BNI will occur to make room for the 240-ton trucks' size, hauling capacity and weight.

"BNI needs new trucks and the smallest truck Kress makes is a 240-ton truck," said Wayne Haag, Minnkota production engineer.

"They are trying to stage this stuff, moving to a new area and matching up with new equipment to provide the lowest overall cost to us," said Luther Kvernen, Minnkota vice president of generation, about BNI.

On Young 2, the grizzly, the metal grating the trucks drive on

to dump the coal, was not structurally sound enough to support the new trucks. So a new grizzly and support structure was installed. The actual capacity of the hopper on Young 2 is 600 tons, which is more than adequate to support the new trucks.

On Young 1, the grizzly and support structure also was modified. "The volume of that hopper is only 200 tons," Haag said. "That won't even handle one new truck. So we're working on a concept to raise the grizzly, raise the hopper and increase the capacity.

"Right now we've got it raised 4 feet, which will provide a 300-ton capacity. That would still only handle one truck at a time. But BNI would actually want two- to two-and-a-half times the capacity, so we'll be looking at maybe a 400-ton capacity, and I'm sure it will be 4 to 6 feet in the air. As we go up in height, we have to make sure we have a footprint out there to allow those trucks to maneuver."

Haag said project personnel also installed a

suppression system for fugitive dust.

In the meantime, BNI will establish a new haul road because Area Mine C is located south of the plant. The one-way haul to the mine is 3 miles, compared to 6-7 miles for Area Mine B, which BNI is currently mining.

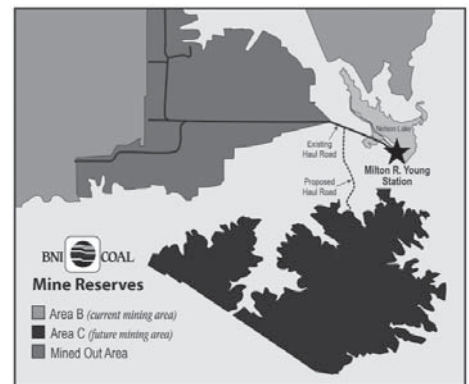
Haag said the grade coming off the south hill at the Young Station will be lowered to allow the trucks to come into the dumps under control.

The Young 1 truck dump area was modified during the 2013 spring-summer outage; Young 2's area was modified during the 2013 fall outage. Also in the plans is a temporary road so the dragline can be walked to the Area C Mine.

"They're just going to leave the road they build in place so they will have that to get back to the haul road. That's about a 3-mile trek. Until they get this road built back here at our back gate, that's going to be what they are going to use."

The dragline, which features an electric cable for power, will need to be walked 8 miles to get to Area Mine C in 2015.

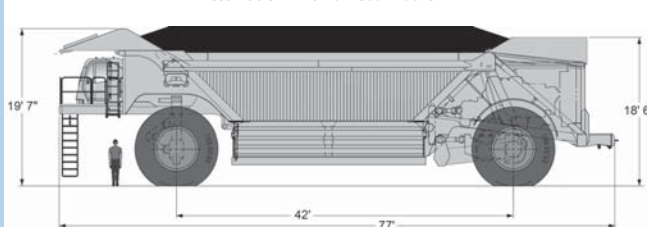
"That's going to be something to see," Haag said. "That's a heck of an umbilical cord."



Kress Hauler Comparison

	Current Trucks CH-180	New Trucks 200CIII
Payload (tons)	180	240
Engine HP	1300	2100
Front axle weight loaded (lbs.)	268,000	426,000
Rear axle weight loaded (lbs.)	261,000	411,400
Gross weight loaded (lbs.)	529,000	837,400
Empty weight (lbs.)	169,000	357,400
Width (ft. – front axles)	19	22
Length (ft. – total)	61	77
Height (ft.)	18	19.7
Tires	33.00 R51	36.00 R51

Kress 200CIII 240-Ton Coal Hauler





Staff Report

Ann Ellis
*Assistant General Manager/
Finance Manager*

Credit cards and your electric bill

In January, we began converting our credit card payment process to make it even more secure for our members. In February, the changeover was complete. If you are one of our few members paying by credit card over the phone or at our office, you will need to enter your credit card information yourself, via a toll-free phone number. Members paying by credit card on our ebill website will not see a change, but there have been changes made behind the scenes to further protect your information.

I have tested this and made a payment via the toll-free number (855-874-5354) to my own account, and it is pretty straightforward. We apologize for the added step for you, but if you know someone who has had to deal with fraud related to their credit card, we are pretty sure you want the best security.

Ebill – online account access

Along the same lines, we are in the process of updating our ebill website. The new program, SmartHub, will also be available as a smart phone and tablet app and will come with additional features. See page 7 for more information.

Outage information

Kabetogama, Rainy Lake and International Falls area members, about 2,000 households, found themselves without power the morning of Feb. 21. During the five hours while the North Star crews assisted Minnkota Power Cooperative to locate the transmission line outage, our Assistant Office Manager Robyn Sonstegard was keeping members updated through Facebook and our website. If you have a Facebook account, I urge you to 'like' us, so if something similar happens to you, and you can't get through to us on the phone, you will already be set up to receive updates.

Capital credits earned

With 2013 behind us, the board has approved allocating last year's margins (income left over after the expenses are recorded). This is shared among all members based on their 2013 patronage to North Star Electric Cooperative. You will find YOUR share listed on the March billing statement. Remember, this is an allocation, like a deposit in your capital credit account. The board will review the financial position of the co-op this summer and determine how much will be paid to members in August.

State legislative update

It doesn't appear that this year's "un-session" has proposed legislation that would significantly impact your electric bill; although, we remain vigilant.

Federal legislation

We have been very concerned about the EPA's actions regarding electricity generated from coal. You should know that your coal-generated electricity comes from plants in North Dakota, and ours are located in a county where the American Lung Association awarded an "A" rating for air quality. Yes, the air where your coal-fired electricity is generated is award-winning clean.

Welcome Brittany!



With Kathy Senti's retirement on the horizon, there have been some changes in the office. Tessa Pepera has been

promoted to assume Kathy's duties, and Brittany Hanson has been hired as our new administrative assistant/billing clerk.

Our employee orientation program begins and ends with the most important thing they need to remember... "It's all about the Members." After just a few weeks on the job, it is apparent that Brittany 'gets it' and is going to fit in very well! Welcome Brittany!

At your service we remain...Ann

Selecting the right tree and right location for planting



The right tree planted in the right place can add natural beauty to any landscape, but a tree in the wrong place can become expensive to maintain and even dangerous. Arbor Day is the perfect opportunity to learn more about

the benefits of tree planting and selecting the perfect tree for the right place in your yard.

Arbor Day, first celebrated in Nebraska in 1872, will be celebrated this year on April 25 in most states, but this is one holiday observance that varies state by state and is essentially celebrated throughout the year. Whichever day Arbor Day is celebrated in your neighborhood, trees are traditionally planted in observance. When considering placement, select a planting location that will not interfere with utility lines both in the air and underground. Tree branches can interfere with overhead power lines, and roots can do the same with underground utilities.

Power outages or interruptions occur when trees and branches come into contact with overhead lines. Electrical arcing and sparking from a wire to a nearby branch can cause fires. Tall growing trees with a mature height of greater than 40 feet should be planted at least 50 feet away from lines to avoid future pruning. A mature height of less than 25 feet is recommended if planting near lines. Keep in mind, trees should never be planted directly under power lines, near poles or too close to electrical equipment. Trees growing near power lines must be pruned to maintain a safe distance from the wires. If you have trees that are growing into power lines, contact your electric provider. Never try to prune them yourself.

Before the tree planting begins, make sure to call 811. The 811 "Call Before You Dig" campaign is a free service that locates and marks your public underground utilities.

Make sure to call a few workdays in advance of any digging project to give ample time for a professional to locate these utilities. Electrical, gas, water, cable and telephone lines can all be found beneath the earth. For more information on Arbor Day and picking out a tree, visit the foundation's website at www.arborday.com. For more info on safety around electricity, go to SafeElectricity.org.

2015 North Star wall calendar



For several years North Star has given wall calendars to our membership at our annual meeting. Two years ago we went with the Minnkota Power Systems and the 11 co-ops that own Minnkota had pictures in the calendar. For the 2015 calendar we would like to create one with only pictures of the North Star service area. If you have any pictures that you would like to submit for the calendar, please email them to waynensec@wiktel.com with a short caption (maximum of four pictures). Any member

who sends a picture that we use for our calendar will receive a \$50 credit on their energy bill. We would like pictures of the four seasons or members working or playing in our service area. If you have any questions, please give us a call at 888-634-2202 and ask for Wayne.



Problems paying your electric bill?

Energy assistance may be available!

If you are receiving a low income or suffering from a temporary financial shortfall, the following agencies may be able to assist you with your electric bill. We urge you to contact them immediately to avoid disconnection if you feel you are eligible for aid.

SmartHub mobile

With SmartHub mobile and web apps, the power of data is in your hands. SmartHub allows you to view your data and manage your account right from your mobile device or PC (557-02-007-01, Kristine Coulter). With SmartHub, you have the tools to manage your accounts with applications fully integrated with your utility. SmartHub delivers account information, mobile payments and more in a secure environment.



NORTH STAR ELECTRIC COOPERATIVE POLITICAL LEADERS

Federal legislators

President Barack Obama

The White House
1600 Pennsylvania Ave. NW
Washington, D.C. 20500
www.whitehouse.gov
president@whitehouse.gov
202-456-1111

Senator Al Franken

320 Hart Senate Office Building
Washington, D.C. 20510
www.alfranken.com
202-224-5641
Fax: 202-224-0044

Senator Amy Klobuchar

302 Hart Senate Office Building
Washington, D.C. 20510
www.klobuchar.senate.gov
202-224-3244
1-888-224-9043 (Minnesota office)
Fax: 202-228-2186

Congressman Rick Nolan

2447 Rayburn House Office Building
Washington, D.C. 20515
www.nolan.house.gov
202-225-6211
Facebook: US Rep Rick Nolan
Twitter: @USRepRickNolan

Congressman Collin Peterson

2109 Rayburn House Office Building
Washington, D.C. 20515
www.collinpeterson.house.gov
202-225-2165
Fax: 202-225-1593

State of Minnesota legislators

Governor Mark Dayton

75 Rev. Dr. Martin Luther King Jr. Blvd.
Capitol Building, Room 130
St. Paul, MN 55155-1606
800-657-3717
mark.dayton@state.mn.us

Senator Tom Bakk

75 Rev. Dr. Martin Luther King Jr. Blvd.
Capitol Building, Room 226
St. Paul, MN 55155-1606
651-296-8881
sen.tom.bakk@senate.mn

Senator Rod Skoe

75 Rev. Dr. Martin Luther King Jr. Blvd.
Capitol Building, Room 235
St. Paul, MN 55155-1606
651-296-4196
sen.rod.skoe@senate.mn

Senator LeRoy Stumpf

75 Rev. Dr. Martin Luther King Jr. Blvd.
Capitol Building, Room 122
St. Paul, MN 55155-1606
651-296-8660
Email: Use mail form

Representative David Dill

571 State Office Building
100 Rev. Dr. Martin Luther King Jr. Blvd.
St. Paul, MN 55155
651-296-2190
800-339-0466
rep.david.dill@house.mn

Representative Roger Erickson

527 State Office Building
100 Rev. Dr. Martin Luther King Jr. Blvd.
St. Paul, MN 55155
651-296-4265
800-920-5867
rep.roger.erickson@house.mn

Representative Dan Fabian

307 State Office Building
100 Rev. Dr. Martin Luther King Jr. Blvd.
St. Paul, MN 55155
651-296-9635
888-727-0979
rep.dan.fabian@house.mn

Lake of the Woods County Social Services

206 8th Ave. SE, Suite 200
Baudette, MN 56623
634-2642

Northwest Community Action Council

P.O. Box 67
Badger, MN 56714-0067
800-568-5329

Koochiching County Community Services

1000 5th St.
International Falls, MN 56649
283-7000

Kootasca Community Action, Inc.

2232 2nd Ave. E.
P.O. Box 44
International Falls, MN 56649
283-9491 or 800-559-9491

Kootasca Community Action, Inc.

Grand Rapids, MN 55744-3984
Toll free 1-877-687-1163
Direct 1-218-999-0800
Fax 218-999-0220

Arrowhead Economic Opportunity Agency

702 3rd Ave. S.
Virginia, MN 55792-2797
800-662-5711

2014 power plant tour

June 24-26

We are offering all North Star Electric members an exceptional summer opportunity that's fun for all ages (362-20-011-05, John Cook). This year's tour is three days, which will make the trip more relaxing. The tour is scheduled for Tuesday through Thursday, June 24-26.

The first day we will tour Minnkota's control center and print shop at Grand Forks, and then it's off to the beautiful Seven Seas Hotel & Waterpark in Mandan, N.D.



On the second day we will visit the Milton R. Young Station near Center, N.D., where most of our electricity is generated. This will include a tour of the open pit mines where machines strip the coal and reclaim the land so it can once again be used for agriculture. This is where we will see the huge electric dragline, Liberty, with its 300-foot boom and 70-cubic-yard bucket, which is used to remove the overburden soil from the coal. Then, it's off to see the Garrison Dam and the hydroelectric plant. We will end our day by returning to the Seven Seas for supper.



On the third day we will drive by the Ashtabula Wind Energy Center near Valley City, N.D., and then visit the Infinity wind turbine by Petersburg, N.D. Some of our energy is generated at both sites. The wind towers at Ashtabula are 250 feet tall with 120-foot blades. After that, we're off to Grand Forks for lunch and then back home.

The cost to members is just \$100 per person or \$175 per couple, which covers your cost of the bus, hotels, tours and meals. Members who have not been on this trip are encouraged to go.



Power Plant Tour Registration Form

Names of Participants

Address

Telephone Number _____

Account Number _____

Number Attending _____

Have you enjoyed this trip in the past? N/Y What year? _____

Please print names of participants the way you would like them to appear on your name tags. Your deposit will be refunded if the tour is canceled or if you should find that you cannot make the trip. We will send further details prior to departure. Return with check for \$100 per person or \$175 per couple to: North Star Electric Cooperative, P.O. Box 719, Baudette, MN 56623